

Using Mozilla Firefox or Google Chrome with Inter-est

What

If you'd prefer to use Mozilla Firefox or Google Chrome as your default Internet explorer you will need to read this document to configure the browser correctly.

Why

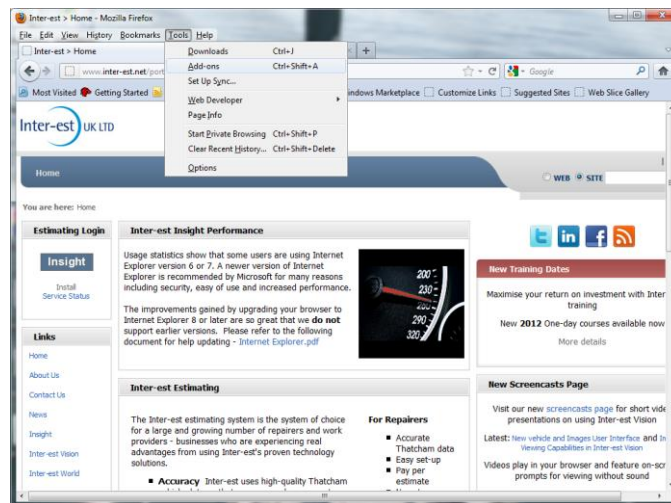
Inter-est uses a Microsoft technology called ClickOnce to deliver and manage the installation of its software. ClickOnce intelligence is built into Microsoft Internet Explorer by default, but needs to be added to other browsers.

How

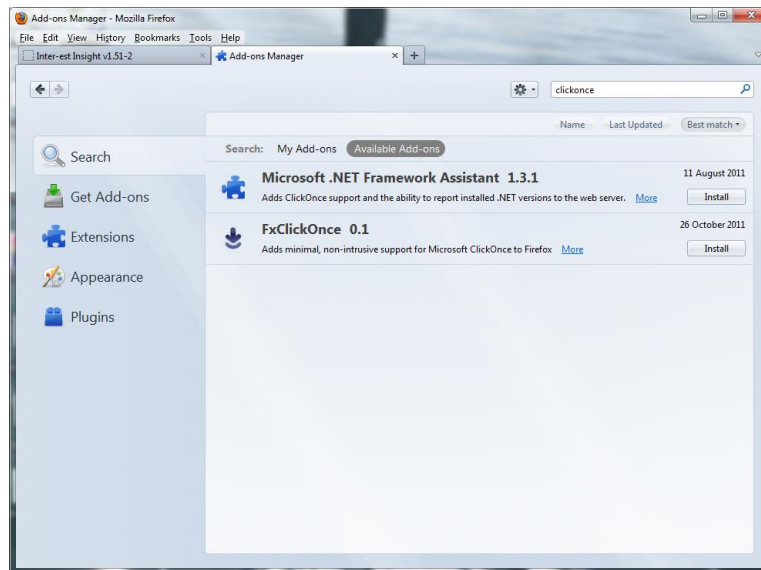
To enable ClickOnce in your browser you will need to follow the browser specific section below:

Mozilla Firefox

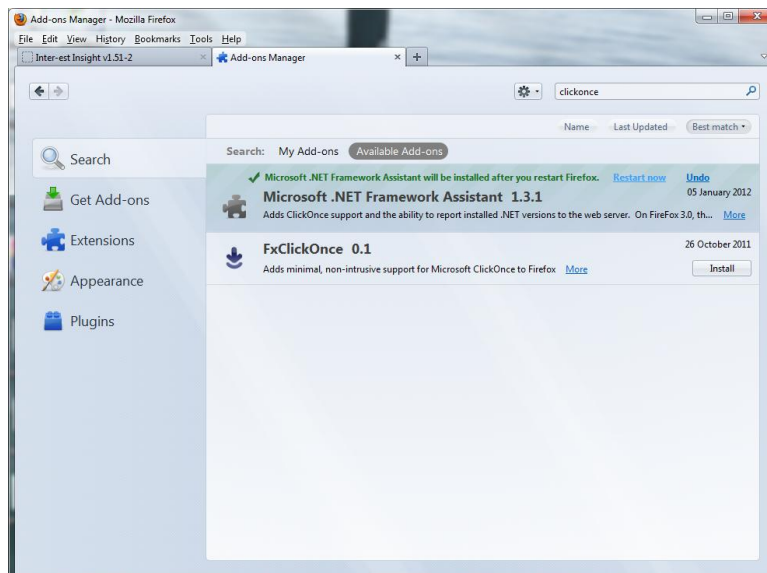
- From the Tools menu select Add-ons



- Search for 'clickonce' by typing it into the search box top right and then choose to install Microsoft .NET Framework Assistant 1.3.1

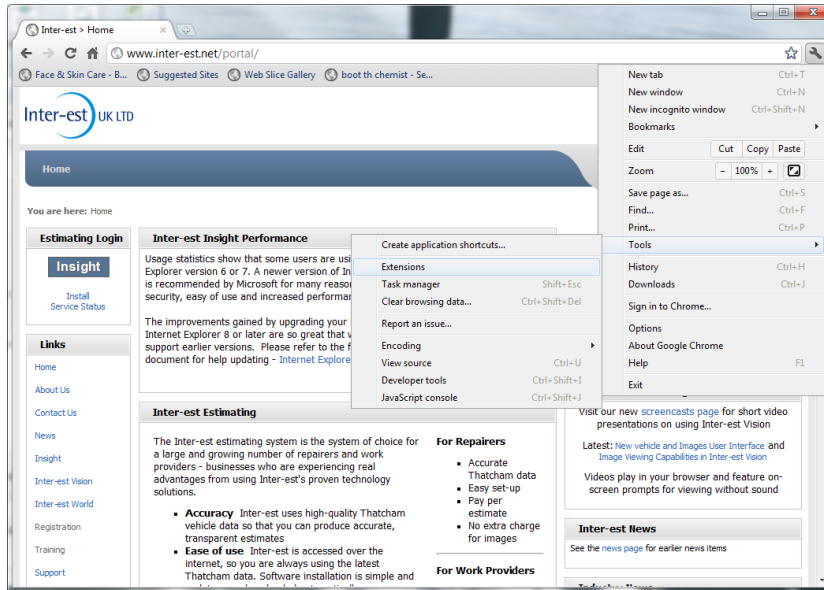


- After finishing the install click the restart now to complete the installation

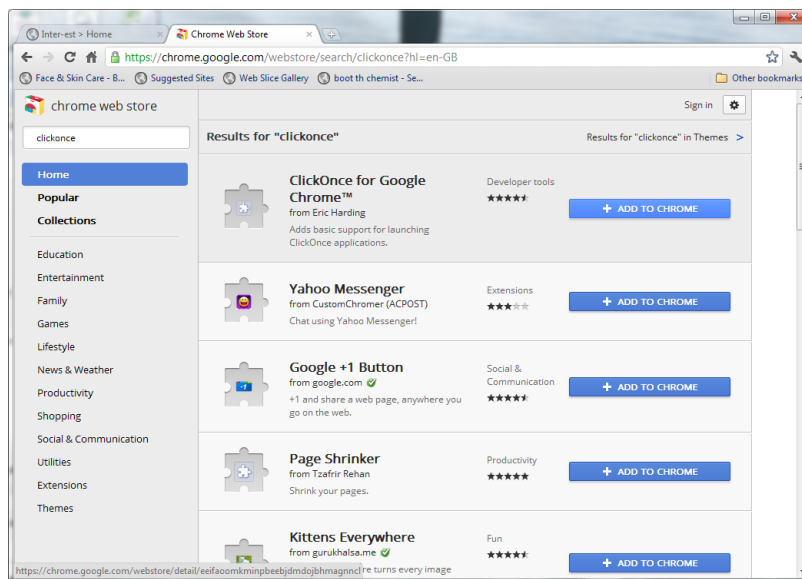


Google Chrome

- From the settings menu choose tools and then extensions



- click the get more extensions, or browse the gallery link to go to the google chrome web store, and search for clickonce.



- Select the +add to chrome on the ClickOnce for Google Chrome extension